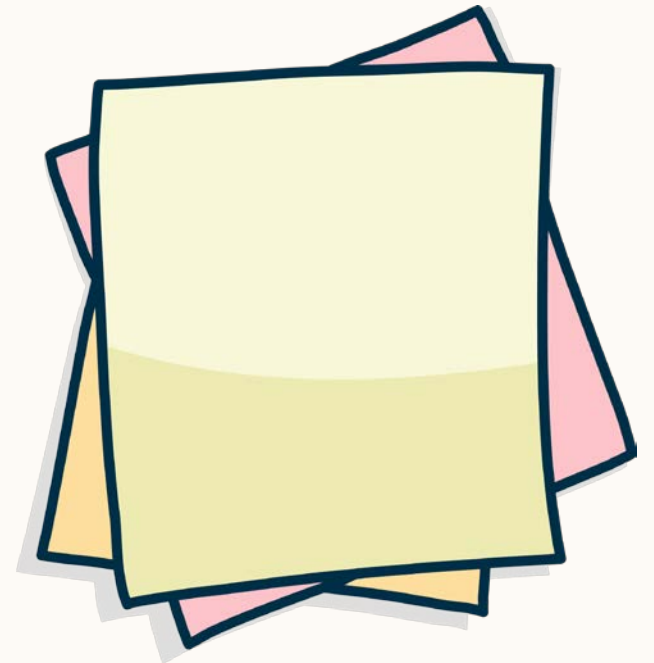


What is a goal you've recently accomplished?

*Grab a post-it note, write your response, & post on
wall*





WELCOME!

Why Relationships Matter

Who to Build Them With

How to Build a Quality Community

Discover Practical Tools and Rhythms




WHY
RELATIONSHIPS
MATTER

**Who helped
you?**

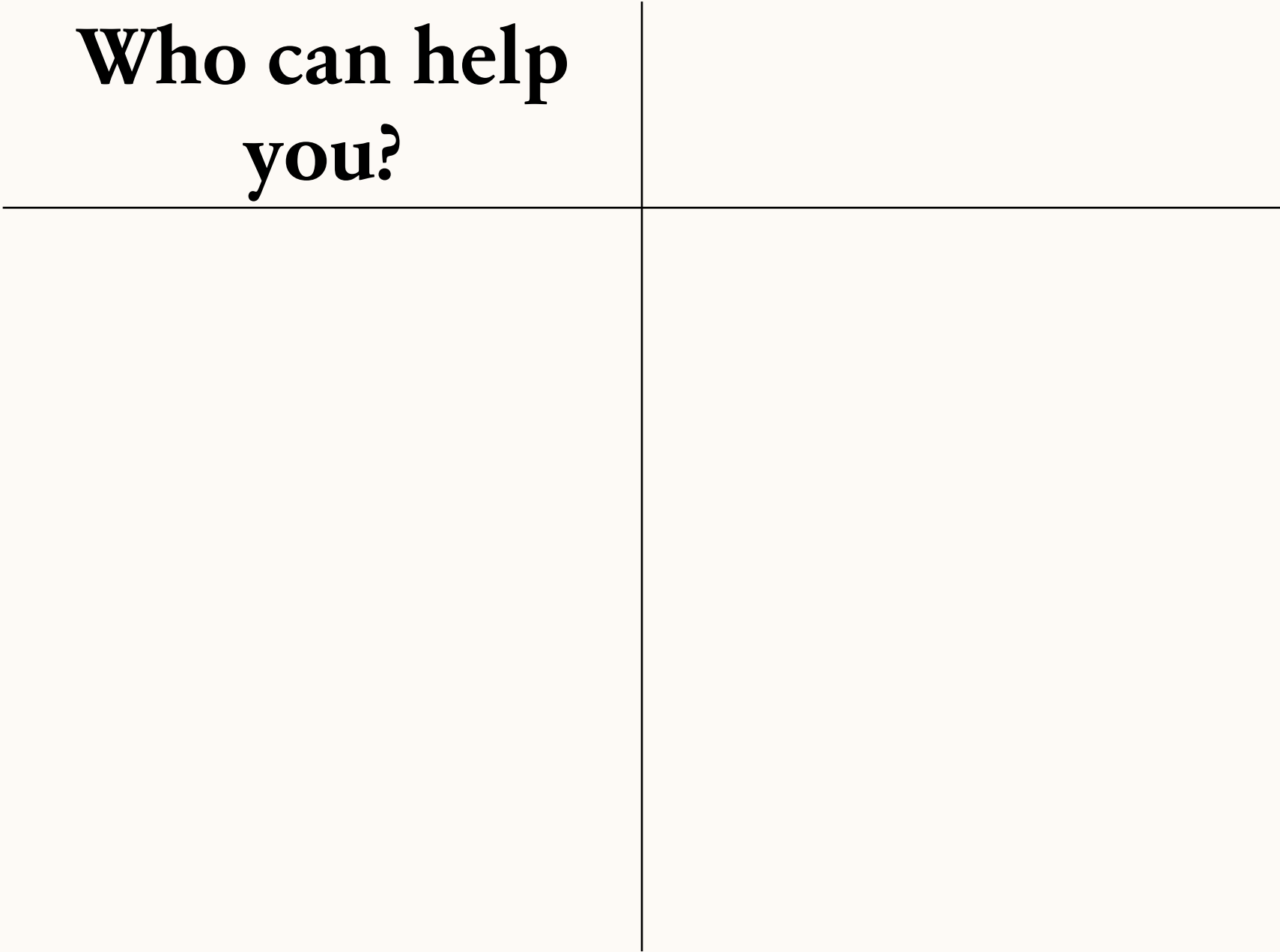
**Who helped
you?**

**Who did you
help?**

The background features a large white circle in the center, partially overlapping a light blue shape on the left and a light pink shape on the right. Below the white circle is a dark blue shape. The text is centered within the white circle.

WHO
TO BUILD
THEM WITH

**Who can help
you?**



**Who can help
you?**

**Who will you
help?**



HOW
TO BUILD A
QUALITY COMMUNITY





WHERE



WHERE

WHAT



WHO

WHERE

WHAT



WHY

WHO

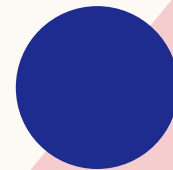
WHERE

WHAT

The background features a large white circle in the center, partially overlapping a light blue shape on the left and a light pink shape on the right. Below the white circle is a large, dark blue shape that also overlaps the white circle. The text is centered within the white circle.

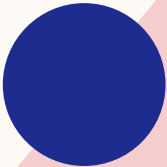
DISCOVER
PRACTICAL TOOLS
AND RHYTHMS

BEFORE
DURING
AFTER



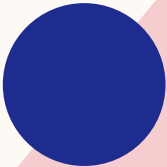
BEFORE

Who, What, When, Where, and Why
Research
Google, social media, LinkedIn
Contact Tracker



DURING

- House
- Buddy system
- Connector
- Supplies



AFTER

Contact Tracker

Thank you match effort/interest

Updates, advice, help, further conversations

Reminders and schedule



TAYLOR WISEMAN

(501) 470-8876

Taylor.Wiseman@mail.house.gov

[linkedin.com/in/taylor-mcneel-wiseman](https://www.linkedin.com/in/taylor-mcneel-wiseman)

Professional Staff

Committee on Natural Resources

Chairman Bruce Westerman (AR-04)